



Quality Engineering Built To Last

For over a quarter of a century BEMCO has led the field in the design and manufacture of equipment for the Surface Finishing Industry.

Our products are used daily in the *Aerospace, Automotive, Medical, PCB, Electronics and Engineering Industries* throughout the **UK, Europe and Globally.**

A company built on integrity and reliability, actively developing new products to enhance our existing range.

Many of the original fixtures and wire forms designed by BEMCO are still in common use to this day.



Electroplating
Fixtures

Electroplating Jigs
for PCB

Paint Fixtures

Standard Titanium
Anodising Jigs
Part 1

Standard Titanium
Anodising Jigs
Part 2

Titanium Jig
Accessories &
Fasteners

Titanium Clips
Part 1

Titanium Clips
Part 2

Blocks & Cradles
Bespoke Titanium
Jigs

Anodes

Heaters:
VAT Hairpin
H + S Tube Type
'U' Type
Phosphate
Tubular
STFX

Heater Controls

Process Tanks

Panels

Coils

Metal Finishing
Accessories

Globemarket t/a BEMCO

Unit 101 - 102
Middlemore Industrial
Estate
Middlemore Road
Smethwick
Birmingham
B66 2EP

Phone: 0121 236 5868

Email:

info@bemco.uk.com

rjl@bemco.uk.com

What We Do

Heaters

Corrosion resistant sheaths in Titanium, Mild Steel, Stainless Steel, Teflon and Lead available from stock in 1-18kW loadings, for over-the-side and through tank wall immersion, with or without thermostatic control. Separate thermostats and pockets. Flanged and screwed versions available.

Jigs and Fixtures

For electroplating, anodising, paint and electroless applications. Standard designs and custom built jigs are our speciality. Quick prototypes and fast turn round refurbishing service is offered.

Coils and Thermal Panels

Maintenance free heating and cooling of all types of process solutions, chemicals and foodstuffs. Thermal panels and coils are available in Titanium, Stainless Steel, Mild Steel and Inconel/Incoloy. Both panels and coils are sized and designed to suit the size of process tanks.

Anode Baskets and Cages

Titanium baskets with a variety of meshes for Nickel, Copper and Acid-zinc plating. Heavy gauge Mild Steel cages for Cyanide-zinc. Complete range of dipping baskets with wire mesh and perforated metals. Titanium anodising baskets made to order and refurbished.

Titanium Fasteners and Turned Parts

Wide range of UNC and metric threaded bolts, screws and hexagon nuts available from stock. Other sizes are available and made to order. Titanium anode hooks, anodising ancillaries and other turned parts are also available.

PVC Coatings

Where practical any product mentioned can be PVC covered in our renowned "Super Beckon". Our coating and stripping facilities are available on sub-contract basis. Collection and redelivery can be arranged if required. Other finishes including Halar and Flurene 177 available on request.

Tanks and Fabrications

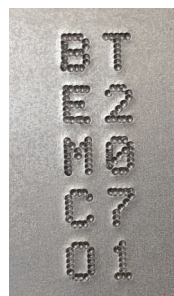
Tanks, vessels, ducting, frames and pipework designed and constructed in wide range of metals and plastics. Coded welding and fabrication service available to meet clients specifications including ASME IX particularly Titanium, Stainless, Inconel/Incoloy.

ID Tags

On all of our jigs we provide an ID tagging system that allows customers to identify the correct jigs when repeat orders are placed. This means you can simply quote the ID tag number and we will know exactly what you want. The tags supplied can be attached to frames, crossbars, coils, panels or stems. The tags will remain visible even after electroplating, anodising or painting. Also it allows customers to easily see which part goes on each specific contact when loading a jig.



ID Tag Machine



Electroplating
Fixtures

Electroplating Jigs
for PCB

Paint Fixtures

Standard Titanium
Anodising Jigs
Part 1

Standard Titanium
Anodising Jigs
Part 2

Titanium Jig
Accessories &
Fasteners

Titanium Clips
Part 1

Titanium Clips
Part 2

Blocks & Cradles

Bespoke Titanium
Jigs

Anodes

Heaters:
VAT Hairpin
H + S Tube Type
'U' Type
Phosphate
Tubular
STFX

Heater Controls

Process Tanks

Panels

Coils

Metal Finishing
Accessories

Globemarket t/a BEMCO

Unit 101 - 102
Middlemore Industrial
Estate
Middlemore Road
Smethwick
Birmingham
B66 2EP

Phone: 0121 236 5868

Email:

info@bemco.uk.com

rij@bemco.uk.com

Electroplating Jigs

'Super-Beckon' PVC plastic coating was developed as a jig insulator and protective covering. It is applied to virtually all our electroplating jigs and some anodising jigs especially where Aluminium jigs with Titanium contacts are called for. 'Super-Beckon' is tough, flexible and resistant to virtually all solutions encountered in the electroplating process and gives BEMCO jigs an unrivalled advantage. 'Super-Beckon' has a variety of uses and a coating service is available. The electroplating jigs illustrated are just a small selection of those we manufacture to meet individual requirements, call us to see what we can do for you.



Electroplating
Fixtures

Electroplating Jigs
for PCB

Paint Fixtures

Standard Titanium
Anodising Jigs
Part 1

Standard Titanium
Anodising Jigs
Part 2

Titanium Jig
Accessories &
Fasteners

Titanium Clips
Part 1

Titanium Clips
Part 2

Blocks & Cradles
Bespoke Titanium
Jigs

Anodes

Heaters:
VAT Hairpin
H + S Tube Type
'U' Type
Phosphate
Tubular
STFX

Heater Controls

Process Tanks

Panels

Coils

Metal Finishing
Accessories

Globemarket t/a BEMCO

Unit 101 - 102
Middlemore Industrial
Estate
Middlemore Road
Smethwick
Birmingham
B66 2EP

Phone: 0121 236 5868

Email:

info@bemco.uk.com

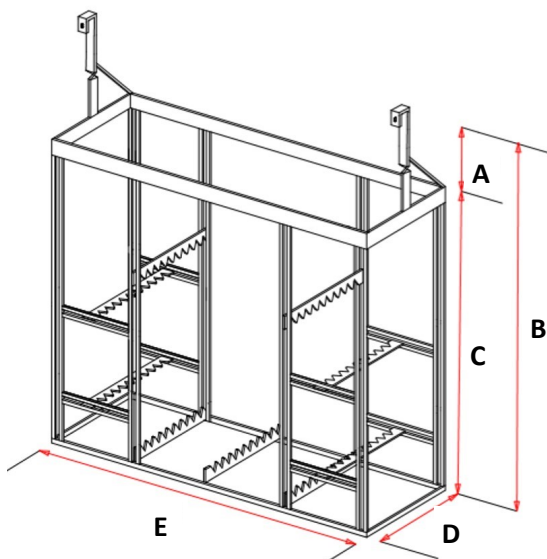
rjl@bemco.uk.com

Electroplating Jigs For PCB's

A comprehensive flexible answer to jiggging printed circuit boards for wet process lines. We provide two basic stem designs to suit most applications and PCB process baskets adjusted to your specification. We also provide a fast and efficient modification, repair and recoat service. The PCB Stems can be made fully out of Stainless Steel or with a Copper Core. Both PCB Stems and Baskets can be coated in PVC and Halar.



Standard M6
Red PCB Thumb
Screw



- A = Hook Length
- B = Overall Height
- C = Working Height
- D = Depth
- E = Width



Bespoke
Contact Combs
designed to
meet customer
requirements.

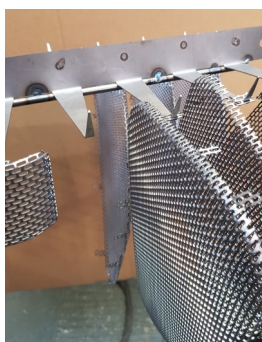
- Electroplating Fixtures
- Electroplating Jigs for PCB
- Paint Fixtures
- Standard Titanium Anodising Jigs Part 1
- Standard Titanium Anodising Jigs Part 2
- Titanium Jig Accessories & Fasteners
- Titanium Clips Part 1
- Titanium Clips Part 2
- Blocks & Cradles
- Bespoke Titanium Jigs
- Anodes
- Heaters:
VAT Hairpin
H + S Tube Type
'U' Type
Phosphate
Tubular
STFX
- Heater Controls
- Process Tanks
- Panels
- Coils
- Metal Finishing Accessories

Globemarket t/a BEMCO

Unit 101 - 102
Middlemore Industrial
Estate
Middlemore Road
Smethwick
Birmingham
B66 2EP
Phone: 0121 236 5868
Email:
info@bemco.uk.com
rjl@bemco.uk.com

Paint Fixtures

We create bespoke paint jigs for holding parts ready to be e-coated, powder coated or any other type of coating you wish add to your units. We can make specific wires or fixtures to keep overspray and scratches down to a minimum. This allows a better quality finish to parts you need painting. These fixtures can be made as frames or detachable stems or crossbars, generally in mild steel but can also be made in stainless.



Electroplating
Fixtures

Electroplating Jigs
for PCB

Paint Fixtures

Standard Titanium
Anodising Jigs
Part 1

Standard Titanium
Anodising Jigs
Part 2

Titanium Jig
Accessories &
Fasteners

Titanium Clips
Part 1

Titanium Clips
Part 2

Blocks & Cradles

Bespoke Titanium
Jigs

Anodes

Heaters:
VAT Hairpin
H + S Tube Type
'U' Type
Phosphate
Tubular
STFX

Heater Controls

Process Tanks

Panels

Coils

Metal Finishing
Accessories

Globemarket t/a BEMCO

Unit 101 - 102
Middlemore Industrial
Estate
Middlemore Road
Smethwick
Birmingham
B66 2EP

Phone: 0121 236 5868

Email:

info@bemco.uk.com

rjl@bemco.uk.com

Standard Titanium Anodising Jigs—Part 1

The 'anorack' range of Titanium anodising jigs which have proved extremely reliable and very popular, comprise standard items which are uncomplicated and yet very effective. We are always happy to develop these designs and others, quickly and efficiently to suit individual requirements where necessary. BEMCO 'anorack' Titanium anodising jigs are the result of many years of development, they offer a complete range of highly adaptable jigs with interchangeable unit construction, offering maximum loading and efficient vat usage.



ST1 Anorack Titanium Stem Jig, 4 way, 3 prong, 915mm overall height, 610mm working depth, 24 or 48 unit version available



ST1A Anorack Titanium Strip Jig, 4 way, 2 prong, 915mm overall height, 610mm working depth, 60 or 120 unit version available



ST1B Anorack Titanium Fishbone Jig, 2 prong, 4 way, 915mm overall height, 610mm working depth, 40 or 80 unit version available



ST2 Universal 915mm Downstem with Single Titanium or Aluminium Hook

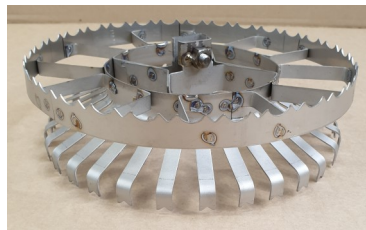
ST2A Universal 915mm Downstem with Double Titanium or Aluminium Hook

ST2 ST2A

Titanium Umbrella Jig



ST3A—Top without support ring, 30 Spring Contacts, 9” Diameter



ST3—Middle with support ring, 30 Spring Contacts, 9” Diameter



ST4—Bottom Notched support ring

Electroplating Fixtures

Electroplating Jigs for PCB

Paint Fixtures

Standard Titanium Anodising Jigs Part 1

Standard Titanium Anodising Jigs Part 2

Titanium Jig Accessories & Fasteners

Titanium Clips Part 1

Titanium Clips Part 2

Blocks & Cradles
Bespoke Titanium Jigs

Anodes

Heaters:
VAT Hairpin
H + S Tube Type
'U' Type
Phosphate Tubular
STFX
Heater Controls

Process Tanks

Panels

Coils

Metal Finishing Accessories

Globemarket t/a BEMCO

Unit 101 - 102

Middlemore Industrial Estate

Middlemore Road

Smethwick

Birmingham

B66 2EP

Phone: 0121 236 5868

Email:

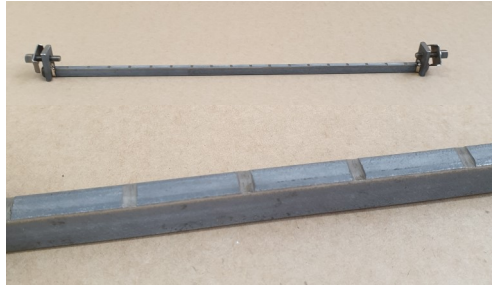
info@bemco.uk.com

rjl@bemco.uk.com

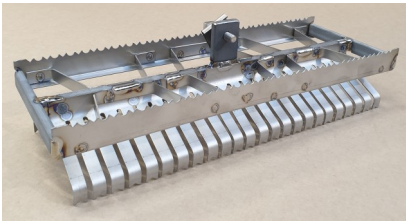
Standard Titanium Anodising Jigs—Part 2



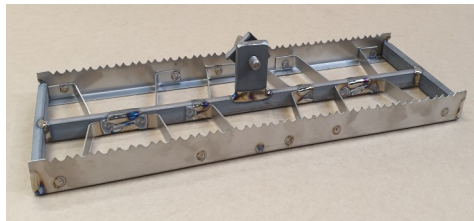
ST5 Anorack 18" Racking Bar
Complete with End Fittings. Also available in 24" (ST6) and 30" (ST7)



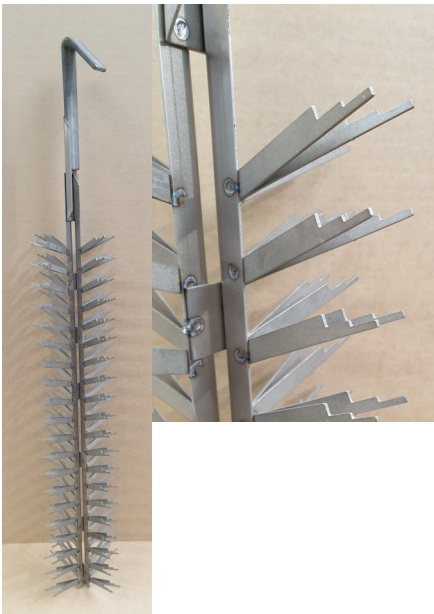
ST8 Anorack 18" Notched Base Bar Complete with End Fittings. Also



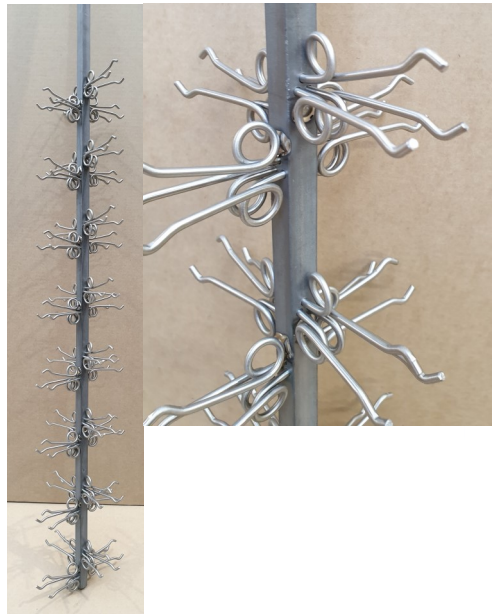
ST11 Anorack Top Notch Spring Contact Unit, 48 Spring Contacts, 12" wide



ST12 Anorack Top Notch Base Support Unit, 12" wide



ST30 A Universal Step Down Jig
Standard length: 915mm
Overall Working Depth: 610mm



ST40
Standard length: 915mm
Overall Working Depth: 610mm
4 Way, 1 Top Spring 2 Bottom Springs, 12 to 68 unit jigs available as standard.

Electroplating Fixtures

Electroplating Jigs for PCB

Paint Fixtures

Standard Titanium Anodising Jigs Part 1

Standard Titanium Anodising Jigs Part 2

Titanium Jig Accessories & Fasteners

Titanium Clips Part 1

Titanium Clips Part 2

Blocks & Cradles

Bespoke Titanium Jigs

Anodes

Heaters:
VAT Hairpin
H + S Tube Type
'U' Type
Phosphate Tubular
STFX

Heater Controls

Process Tanks

Panels

Coils

Metal Finishing Accessories

Globemarket t/a BEMCO

Unit 101 - 102
Middlemore Industrial Estate
Middlemore Road
Smethwick
Birmingham
B66 2EP

Phone: 0121 236 5868

Email:

info@bemco.uk.com

ril@bemco.uk.com

Titanium Jig Accessories & Fasteners



ST13A
General Purpose Type 'A' Clip with a ST15 fastener



ST17
A Rectangular Titanium Flanged Washer to fit universal downstem



ST14 Single Aluminium or Titanium Hook with Nuts, Bolts & Washers



ST14A Double Aluminium or Titanium Hook with Nuts, Bolts & Washers



Type 'R' Single Aluminium or Titanium Hook



ST15 5/16 UNC Screw 25mm or 30mm long. T-bar optional.



Our range of **Aluminium Umbrella Jigs** for use in conjunction with the BSC1 or BSC2 Plastic Block. They are available in 18, 20 or 30 unit sizes

ALU-U18



ALU-U20



ALU-U30



BEMCO has been producing Titanium fasteners and machined parts for over 25 years. These can be made as non-standard items based on customer requirements. From stock we have a large range of Metric and Imperial screws, nuts and washers. Non-standard CNC machined parts can be offered to meet customer needs.



Electroplating Fixtures

Electroplating Jigs for PCB

Paint Fixtures

Standard Titanium Anodising Jigs Part 1

Standard Titanium Anodising Jigs Part 2

Titanium Jig Accessories & Fasteners

Titanium Clips Part 1

Titanium Clips Part 2

Blocks & Cradles

Bespoke Titanium Jigs

Anodes

Heaters:
VAT Hairpin
H + S Tube Type
'U' Type
Phosphate Tubular
STFX

Heater Controls

Process Tanks

Panels

Coils

Metal Finishing Accessories

Globemarket t/a BEMCO

Unit 101 - 102
Middlemore Industrial Estate
Middlemore Road
Smethwick
Birmingham
B66 2EP

Phone: 0121 236 5868

Email:

info@bemco.uk.com

rjl@bemco.uk.com

BEMCO Titanium Clips — Part 1

We offer a wide range of Titanium Clips that can be added to crossbars or stems to meet the customer needs. They differ in Sheet Thickness to Tip Width for strength and durability to suit the various units to be anodised.



Sheet Thickness	Tip Width	Item No.
0.8	1mm	FK-A-1-0.8
0.8	2mm	FK-A-2-0.8
0.8	3mm	FK-A-3-0.8
0.8	4mm	FK-A-4-0.8
0.8	5mm	FK-A-5-0.8
Sheet Thickness	Tip Width	Item No.
1.27	1mm	FK-A-1-1.27
1.27	2mm	FK-A-2-1.27
1.27	3mm	FK-A-3-1.27
1.27	4mm	FK-A-4-1.27
1.27	5mm	FK-A-5-1.27

Sheet Thickness	Tip Width	Item No.
1	1mm	FK-A-1-1.0
1	2mm	FK-A-2-1.0
1	3mm	FK-A-3-1.0
1	4mm	FK-A-4-1.0
1	5mm	FK-A-5-1.0
Sheet Thickness	Tip Width	Item No.
1.57	1mm	FK-A-1-1.57
1.57	2mm	FK-A-2-1.57
1.57	3mm	FK-A-3-1.57
1.57	4mm	FK-A-4-1.57
1.57	5mm	FK-A-5-1.57



Sheet Thickness	Tip Width	Item No.
0.8	1mm	FK-B-1-0.8
0.8	2mm	FK-B-2-0.8
0.8	3mm	FK-B-3-0.8
0.8	4mm	FK-B-4-0.8
0.8	5mm	FK-B-5-0.8
Sheet Thickness	Tip Width	Item No.
1.27	1mm	FK-B-1-1.27
1.27	2mm	FK-B-2-1.27
1.27	3mm	FK-B-3-1.27
1.27	4mm	FK-B-4-1.27
1.27	5mm	FK-B-5-1.27

Sheet Thickness	Tip Width	Item No.
1	1mm	FK-B-1-1.0
1	2mm	FK-B-2-1.0
1	3mm	FK-B-3-1.0
1	4mm	FK-B-4-1.0
1	5mm	FK-B-5-1.0
Sheet Thickness	Tip Width	Item No.
1.57	1mm	FK-B-1-1.57
1.57	2mm	FK-B-2-1.57
1.57	3mm	FK-B-3-1.57
1.57	4mm	FK-B-4-1.57
1.57	5mm	FK-B-5-1.57



Sheet Thickness	Tip Width	Item No.
0.8	1mm	FK-C-1-0.8
0.8	2mm	FK-C-2-0.8
0.8	3mm	FK-C-3-0.8
0.8	4mm	FK-C-4-0.8
0.8	5mm	FK-C-5-0.8
Sheet Thickness	Tip Width	Item No.
1.27	1mm	FK-C-1-1.27
1.27	2mm	FK-C-2-1.27
1.27	3mm	FK-C-3-1.27
1.27	4mm	FK-C-4-1.27
1.27	5mm	FK-C-5-1.27

Sheet Thickness	Tip Width	Item No.
1	1mm	FK-C-1-1.0
1	2mm	FK-C-2-1.0
1	3mm	FK-C-3-1.0
1	4mm	FK-C-4-1.0
1	5mm	FK-C-5-1.0
Sheet Thickness	Tip Width	Item No.
1.57	1mm	FK-C-1-1.57
1.57	2mm	FK-C-2-1.57
1.57	3mm	FK-C-3-1.57
1.57	4mm	FK-C-4-1.57
1.57	5mm	FK-C-5-1.57

Electroplating Fixtures

Electroplating Jigs for PCB

Paint Fixtures

Standard Titanium Anodising Jigs Part 1

Standard Titanium Anodising Jigs Part 2

Titanium Jig Accessories & Fasteners

Titanium Clips Part 1

Titanium Clips Part 2

Blocks & Cradles

Bespoke Titanium Jigs

Anodes

Heaters:
VAT Hairpin
H + S Tube Type
'U' Type
Phosphate
Tubular
STFX

Heater Controls

Process Tanks

Panels

Coils

Metal Finishing Accessories

Globemarket t/a BEMCO

Unit 101 - 102

Middlemore Industrial Estate

Middlemore Road

Smethwick

Birmingham

B66 2EP

Phone: 0121 236 5868

Email:

info@bemco.uk.com

rjl@bemco.uk.com

BEMCO Titanium Clips — Part 2



Sheet Thickness	Tip Width	Item No.
0.8	1mm	KL-3S-0.8-1.0
0.8	1.6mm	KL-3S-0.8-1.6
0.8	2mm	KL-3S-0.8-2.0
0.8	3mm	KL-3S-0.8-3.0
Sheet Thickness	Tip Width	Item No.
1.27	1mm	KL-3S-1.27-1.0
1.27	1.6mm	KL-3S-1.27-1.6
1.27	2mm	KL-3S-1.27-2.0
1.27	3mm	KL-3S-1.27-3.0

Sheet Thickness	Tip Width	Item No.
1	1mm	KL-3S-1.0-1.0
1	1.6mm	KL-3S-1.0-1.6
1	2mm	KL-3S-1.0-2.0
1	3mm	KL-3S-1.0-3.0
Sheet Thickness	Tip Width	Item No.
1.57	1mm	KL-3S-1.57-1.0
1.57	1.6mm	KL-3S-1.57-1.6
1.57	2mm	KL-3S-1.57-2.0
1.57	3mm	KL-3S-1.57-3.0



Sheet Thickness	Item No.
0.8	KL-SP-0.8
1	KL-SP-1.0
1.27	KL-SP-1.27
1.57	KL-SP-1.57



Sheet Thickness	Item No.
0.8	KL-SC-0.8
1	KL-SC-1.0
1.27	KL-SC-1.27
1.57	KL-SC-1.57



Sheet Thickness	Item Number
0.8	KL-V-SC-0.8
1	KL-V-SC-1.0
1.27	KL-V-SC-1.27
1.57	KL-V-SC-1.57

Sheet Thickness	Item Number
0.8	KL-V-3P-0.8
1	KL-V-3P-1.0
1.27	KL-V-3P-1.27
1.57	KL-V-3P-1.57

Sheet Thickness	Item Number
0.8	KL-V-4P-0.8
1	KL-V-4P-1.0
1.27	KL-V-4P-1.27
1.57	KL-V-4P-1.57



Sheet Thickness	Item Number
0.8	KL-V-GR-0.8
1	KL-V-GR-1.0
1.27	KL-V-GR-1.27
1.57	KL-V-GR-1.57

Sheet Thickness	Item Number
0.8	KL-V-GS-0.8
1	KL-V-GS-1.0
1.27	KL-V-GS-1.27
1.57	KL-V-GS-1.57

Sheet Thickness	Item Number
0.8	KL-V-PR-0.8
1	KL-V-PR-1.0
1.27	KL-V-PR-1.27
1.57	KL-V-PR-1.57

Electroplating Fixtures

Electroplating Jigs for PCB

Paint Fixtures

Standard Titanium Anodising Jigs Part 1

Standard Titanium Anodising Jigs Part 2

Titanium Jig Accessories & Fasteners

Titanium Clips Part 1

Titanium Clips Part 2

Blocks & Cradles

Bespoke Titanium Jigs

Anodes

Heaters:
VAT Hairpin
H + S Tube Type
'U' Type
Phosphate Tubular
STFX

Heater Controls

Process Tanks

Panels

Coils

Metal Finishing Accessories

Globemarket t/a BEMCO

Unit 101 - 102

Middlemore Industrial Estate

Middlemore Road

Smethwick

Birmingham

B66 2EP

Phone: 0121 236 5868

Email:

info@bemco.uk.com

rjl@bemco.uk.com

BEMCO Blocks & Cradles



BCS1
Plastic Block Complete with Hex Head Screw



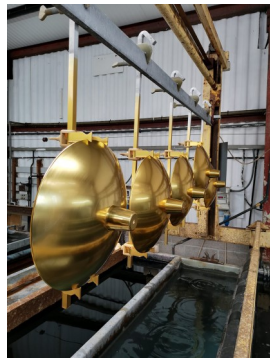
BCS2
Plastic Block Complete with Screw



BCS3
Titanium Block Complete with Screw



BCS1-SW
Replacement Screw



BCS2-SW
Replacement Screw



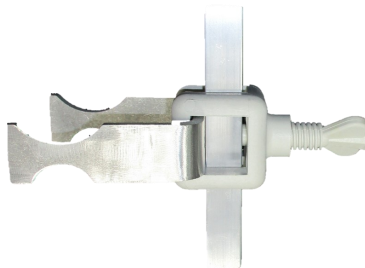
BSC4
Titanium Cradle
3mm Thick Sheet
BSC4—75 75mm Long
BSC4—94 94mm Long



BSC5
Titanium Cradle
3mm Thick Sheet
BSC5—75 75mm Long
BSC5—94 94mm Long



BSC6
Aluminium Cradle
30mm X 6mm Thick
BSC6—75 75mm Long
BSC6—94 94mm Long



Example of **BSC2 / BSC6**

Electroplating Fixtures

Electroplating Jigs for PCB

Paint Fixtures

Standard Titanium Anodising Jigs Part 1

Standard Titanium Anodising Jigs Part 2

Titanium Jig Accessories & Fasteners

Titanium Clips Part 1

Titanium Clips Part 2

Blocks & Cradles
Bespoke Titanium Jigs

Anodes

Heaters:
VAT Hairpin
H + S Tube Type
'U' Type
Phosphate Tubular
STFX

Heater Controls

Process Tanks

Panels

Coils

Metal Finishing Accessories

Globemarket t/a BEMCO

Unit 101 - 102

Middlemore Industrial Estate

Middlemore Road

Smethwick

Birmingham

B66 2EP

Phone: 0121 236 5868

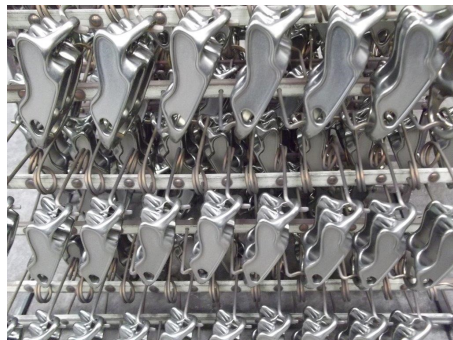
Email:

info@bemco.uk.com

rjl@bemco.uk.com

Bespoke Titanium Jigs

As well as the standard range of Titanium anodising jigs we also offer bespoke jigs created to meet your needs. We make floating jigs, rotating jigs, extending jigs plus many more.



Electroplating
Fixtures

Electroplating Jigs
for PCB

Paint Fixtures

Standard Titanium
Anodising Jigs
Part 1

Standard Titanium
Anodising Jigs
Part 2

Titanium Jig
Accessories &
Fasteners

Titanium Clips
Part 1

Titanium Clips
Part 2

Blocks & Cradles

Bespoke Titanium
Jigs

Anodes

Heaters:
VAT Hairpin
H + S Tube Type
'U' Type
Phosphate
Tubular
STFX

Heater Controls

Process Tanks

Panels

Coils

Metal Finishing
Accessories

Globemarket t/a BEMCO

Unit 101 - 102

Middlemore Industrial

Estate

Middlemore Road

Smethwick

Birmingham

B66 2EP

Phone: 0121 236 5868

Email:

info@bemco.uk.com

rjl@bemco.uk.com

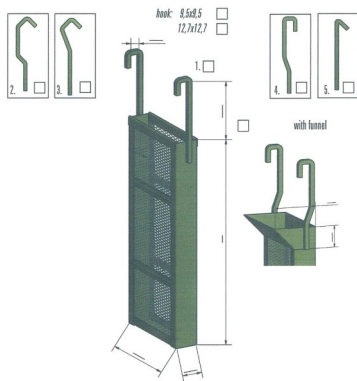
Anode Baskets, Bags & Mesh

Anode Baskets can be made from **Titanium, Stainless Steel, Mild Steel, PVC Coated, Incoloy, Monel and Polypropylene**. Metal baskets have an all-welded construction ensuring good electrical conductivity and long life in normal plating applications. Available in a variety of lengths, widths & depths standard and non-standard sizes can be manufactured to your individual requirements.

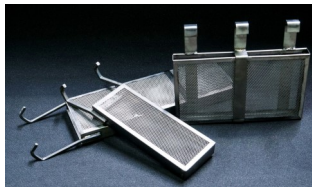
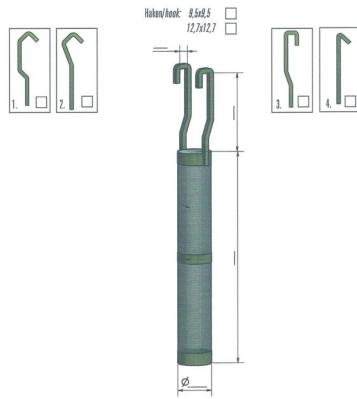
Anode bags, made from **Polypropylene or Cotton**, are also available, again, made to order.

Commercially pure Tin or Lead Anodes can be made to suit customer requirements.

Titanium Fine Mesh Anode Basket



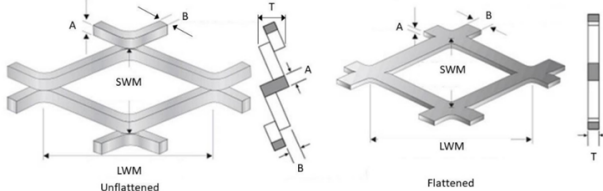
Titanium Fine Mesh Anode Cage



Pure Titanium Mixed Metal Oxide (**MMO**) are made by coating a substrate, such as plate or expanded mesh, which we offer to suit our customers requirements



Name	LWM	SWM	B	A	T	Type	Surface factor
	[mm]	[mm]	[mm]	[mm]	[mm]		
A	10,2	5,6	1,0	1,0	1,3-1,4	Semi-flattened	1,3
B	10,2	5,6	1,0	1,0	1,0	Flattened	1,3
C	13,5	6,2	2,0	1,5	1,75-1,90	Flattened	2,0



Material

Gr1/Gr2 Titanium Based

Coating

Iridium—Tantalum
 Ruthenium—Iridium
 Ruthenium—Iridium Titanium
 Platinum
 Ruthenium Oxide
 Iridium Oxide as Coating

Shape of Base Material

Sheet, Pipe, Rod, Wire and Mesh

Electroplating Fixtures

Electroplating Jigs for PCB

Paint Fixtures

Standard Titanium Anodising Jigs Part 1

Standard Titanium Anodising Jigs Part 2

Titanium Jig Accessories & Fasteners

Titanium Clips Part 1

Titanium Clips Part 2

Blocks & Cradles

Bespoke Titanium Jigs

Anodes

Heaters:
 VAT Hairpin
 H + S Tube Type
 'U' Type
 Phosphate
 Tubular
 STFX

Heater Controls

Process Tanks

Panels

Coils

Metal Finishing Accessories

Globemarket t/a BEMCO

Unit 101 - 102
 Middlemore Industrial Estate
 Middlemore Road
 Smethwick
 Birmingham
 B66 2EP

Phone: 0121 236 5868

Email:

info@bemco.uk.com

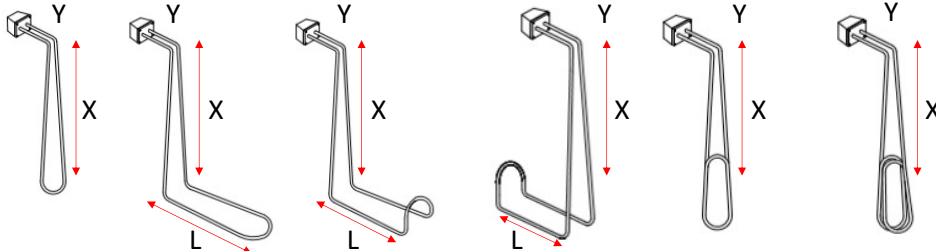
rjl@bemco.uk.com

Heaters

At BEMCO we offer various types of heaters. These heaters are designed to be installed into **electroplating, anodising, chemical or aqueous VAT's** or Tanks. The types we offer are as follows:

- VAT Heater
- 'U' Type Heater
- H + S Type Heater
- Thermostat with Sealed Pocket

VAT Heaters



Standard

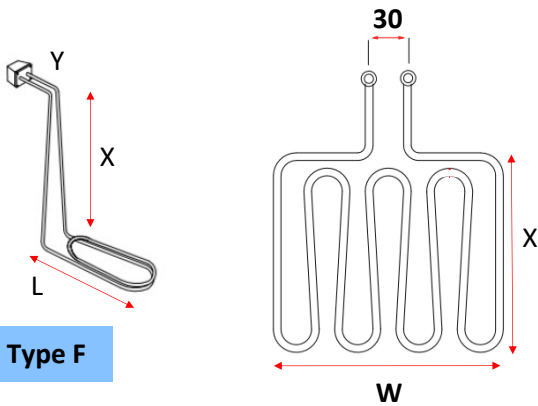
Type A

Type B

Type C

Type D
Double Loop

Type E
Triple Loop



Type F

Type G
1 Phase Only

L = 90mm Minimum
W = 356mm Minimum
X = Depth of tank clearance which allows for pipework and sludge if necessary
Y = 125mm Standard
Note = Tape on each heater supplied indicates the minimum solution level required

H + S Type Heaters



V Type TC Heater



Thermostat with Sealed Pocket

Available in Stainless (JSP), Titanium (JTP) or PVC Coated (JPP).

Temperature Range: 0 — 100°C

Standard Size: Y = 125mm X = 525mm

Custom lengths available



Electroplating Fixtures

Electroplating Jigs for PCB

Paint Fixtures

Standard Titanium Anodising Jigs Part 1

Standard Titanium Anodising Jigs Part 2

Titanium Jig Accessories & Fasteners

Titanium Clips Part 1

Titanium Clips Part 2

Blocks & Cradles

Bespoke Titanium Jigs

Anodes

Heaters:
VAT Hairpin
H + S Tube Type
'U' Type
Phosphate Tubular
STFX

Heater Controls

Process Tanks

Panels

Coils

Metal Finishing Accessories

Globemarket t/a BEMCO

Unit 101 - 102
Middlemore Industrial Estate
Middlemore Road
Smethwick
Birmingham
B66 2EP

Phone: 0121 236 5868

Email:

info@bemco.uk.com

rjl@bemco.uk.com

VAT Type Heaters

“V” type Hairpin Heaters are designed for clamping over the side of Metal Finishing Chemical/Water Vats. BEMCO offer a wide range of single and 3 phase electric VAT heaters from stock. Most dimensional and corrosion resistance requirements can be catered for. BEMCO specialise in producing heaters to individual customer’s requirements or can offer to carry a design or a specification study on behalf of a client. Elements are available sheathed in; Titanium or Stainless Steel Type 316. A range of single and triple element heaters, with loadings from 2 to 18 kW can be supplied from stock. Elements are mineral-filled and rated 230v single phase, multi-element units are rated 400v three phase, at stated kW loadings. *N.B. Whilst ready to advise on the type of heater required, BEMCO recommend that customers check with the suppliers of the solution to be heated as to the suitability of the sheathed material to be used.* To ensure the safety of operating personnel, we strongly urge that all heaters be protected by earth leakage circuit breakers which should be installed to current I.E.E. regulations. Complete with ABS plastic terminal box to IP65 rating. **Lead Cladding** is also available on the standard range of VAT Type Heater.

Standard Range		
Sheath Material	No Thermostat	With Thermostat
Stainless Steel	VS	VS TC
Titanium	VT	VT TC

Load Kw	Surface Rating		Cold Leg (mm)	Vertical Leg (mm)	Order Reference		Weight (KG)
	W/cm ²	W/in ²			S.S 316	Titanium	
2	7.5	48	170	500	VS226	VT226	1
3	7.5	48	340	850	VS338	VT338	1.3
4	7.8	50	340	1000	VS444	VT444	1.5
6	7.8	50	340	1350	VS658	VT658	1.8
6	7.5	48	170	500	VS626	VT626	3.5
9	7.5	48	340	850	VS938	VT938	3.8
12	7.8	50	340	1000	VS1244	VT1244	4.2
18	7.8	50	340	1350	VS1858	VT1858	5

“TC” Heaters with Built-in thermostats 2 to 4kW, 1 phase. TC Type heaters incorporate an integral 16 amp rated thermostat unit which opens on a rising temperature: range is from 0-100°C (32-212°F). Loadings are available from 2 to 4 kW and are otherwise to the same specification as the V type range.

TC Type							
Load Kw	Surface Rating		Cold Leg (mm)	Vertical Leg (mm)	Order Reference		Weight (KG)
	W/cm ²	W/in ²			S.S 316	Titanium	
2	7.5	48	170	500	VS226 TC	VT226 TC	1.5
3	7.5	48	340	850	VS338 TC	VT338 TC	1.6
4	7.8	50	340	1000	VS444 TC	VT444 TC	1.8

- Electroplating Fixtures
- Electroplating Jigs for PCB
- Paint Fixtures
- Standard Titanium Anodising Jigs Part 1
- Standard Titanium Anodising Jigs Part 2
- Titanium Jig Accessories & Fasteners
- Titanium Clips Part 1
- Titanium Clips Part 2
- Blocks & Cradles
- Bespoke Titanium Jigs
- Anodes
- Heaters: VAT Hairpin H + S Tube Type 'U' Type Phosphate Tubular STFX
- Heater Controls
- Process Tanks
- Panels
- Coils
- Metal Finishing Accessories

Globemarket t/a BEMCO

Unit 101 - 102
Middlemore Industrial Estate
Middlemore Road
Smethwick
Birmingham
B66 2EP

Phone: 0121 236 5868

Email:

info@bemco.uk.com

rjl@bemco.uk.com

H + S Type Tube Heaters

Low watts density, withdrawable core, corrosion resistant, metal sheathed vat heaters are available for vertical (H Type) and horizontal (S Type) mounting for electroplating, anodising, chemical and aqueous vats. **Advantages :**

- Have a much lower working surface rating (lower watts density) than conventional vat heaters.
- Elements encased in their own individual corrosion resistant metal sleeve. They are less prone to scale build up and mechanical damage.
- Withdrawable core permits easy replacement of elements and eliminates the need to drain tanks (vats) when servicing.

H Type								
Load Kw	Phases	Surface Rating		Cold Leg (mm)	Vertical Leg (mm)	Order Reference		Weight (KG)
		W/cm ²	W/in ²			S.S 316	Titanium	
2	1	2.4	15	228	762	HS230	HT230	2.4
3	1	3.6	23	280	889	HS335	HT335	2.6
4	1	3.6	23	330	1067	HS442	HT442	3.2
6	1 or 3	2.4	15	228	762	HS630	HT630	7
9	1 or 3	3.6	23	280	889	HS935	HT935	8
12	1 or 3	3.6	23	330	1067	HS124	HT124	9

S Type								
Load Kw	Phases	Surface Rating		Cold Leg (mm)	Vertical Leg (mm)	Order Reference		Weight (KG)
		W/cm ²	W/in ²			S.S 316	Titanium	
2	1	2.4	15	228	762	SS230	ST230	3.2
3	1	3.6	23	280	889	SS335	ST335	3.8
4	1	3.6	23	330	1067	SS442	ST442	4.2
6	1 or 3	2.4	15	228	762	SS630	ST630	11.4
9	1 or 3	3.6	23	280	889	SS935	ST935	12.4
12	1 or 3	3.6	23	330	1067	SS124	ST124	13.4

S Type for side entry, vertical & horizontal mounting 2, 3 and 4kW are available on BS10 Table E, 2 inch nominal bore flange as standard. Triple elements 6, 9 and 12kW are available on their own heavy duty rectangular flange.

Mounting: H Type for tank rim mounting. S Type, flange or screwed boss fixing of single phased units.

Voltage: 230v single phase, 400v 3 phase star connection to give full kW ratings.

Note: Lower voltages will reduce kW rating.

Elements: High quality wire surrounded by mineral insulating powder encased by 2" inch, stainless steel type 316 or titanium tube.

Operating Temperature and Pressure: Working temperature is up to 150°C (300°F) maximum. Heaters have a maximum working pressure of (150 psi) 10 bar. Higher working pressures made to order.

Thermostat: Supplied at extra cost. Customer to specify temperature range required

Optional Extras: Mounting flanges, 2 1/4" BSP weld sockets, thermostats and pockets, length extension and element replacements.

Electroplating Fixtures

Electroplating Jigs for PCB

Paint Fixtures

Standard Titanium Anodising Jigs Part 1

Standard Titanium Anodising Jigs Part 2

Titanium Jig Accessories & Fasteners

Titanium Clips Part 1

Titanium Clips Part 2

Blocks & Cradles

Bespoke Titanium Jigs

Anodes

Heaters:
VAT Hairpin
H + S Tube Type
'U' Type
Phosphate
Tubular
STFX

Heater Controls

Process Tanks

Panels

Coils

Metal Finishing Accessories

Globemarket t/a BEMCO

Unit 101 - 102

Middlemore Industrial Estate

Middlemore Road

Smethwick

Birmingham

B66 2EP

Phone: 0121 236 5868

Email:

info@bemco.uk.com

rjl@bemco.uk.com

'U' Type Heaters

At BEMCO we offer a specialist range of Industrial Immersion Heaters with 2¼" BSP head. **Stainless Steel Type 316L...Type US/Titanium...Type UT**. The BEMCO range of specialist industrial immersion heaters is designed for use where standard heaters are unsuitable for many arduous conditions. They are suitable for both vertical and horizontal mounting.

SS316L Stainless Steel 11mm Diameter Elements								
Load (Kw)	Number of Elements	Phases	Surface Rating		Immersed Length		Order Reference	Weight (KG)
			W/cm ²	W/in ²	mm	in		
2	1	1	6.5	42	432	17	US17-2/1	1.5
3	1	1	7.3	47	585	23	US23-3/1	1.6
4	1	1	13	84	432	17	US17-4/1	1.5
4	1	1	7.8	50	737	29	US29-4/1	1.7
6	2	1	7.3	47	585	23	US23-6/2	2.1
6	3	1 or 3	6.5	42	432	17	US17-6/3	2.5
9	3	1 or 3	7.3	47	585	23	US23-9/3	2.6
12	3	1 or 3	7.8	50	737	29	US29-12/3	3

Titanium 11mm Diameter Elements								
Load (Kw)	Number of Elements	Phases	Surface Rating		Immersed Length		Order Reference	Weight (KG)
			W/cm ²	W/in ²	mm	in		
2	1	1	6.5	42	432	17	UT17-2/1	1.5
3	1	1	7.3	47	585	23	UT23-3/1	1.6
4	1	1	7.8	50	737	29	UT29-4/1	1.7
4	2	1	6.5	42	432	17	UT17-4/2	2
6	2	1	7.3	47	585	23	UT23-6/2	2.1
6	3	1 or 3	6.5	42	432	17	UT17-6/3	2.5
8	2	1	7.8	50	737	29	UT29-8/2	2.5
9	3	1 or 3	6.5	42	585	23	UT23-9/3	2.7
12	3	1 or 3	7.8	50	737	29	UT29-12/3	3



Head: 2¼" BSP male thread in stainless steel type 316 (US) or titanium (UT)
Voltage: 230v single phase, 400v 3 phase star connection to give full kW ratings.
Elements: High quality wire surrounded by mineral insulating powder encased by stainless steel type 316 or titanium with a 38mm dead leg on wet side of head.
Operating Temperature and Pressure: Working temperature is up to 150°C (300°F) maximum. Heaters have a maximum working pressure of (150 psi) 10 bar. Higher working pressures made to order.
Thermostat: Supplied at extra cost. Customer to specify temperature range required
Optional Extras: Mounting flanges, 2¼" BSP weld sockets, thermostats and pockets, length extension and element replacements.

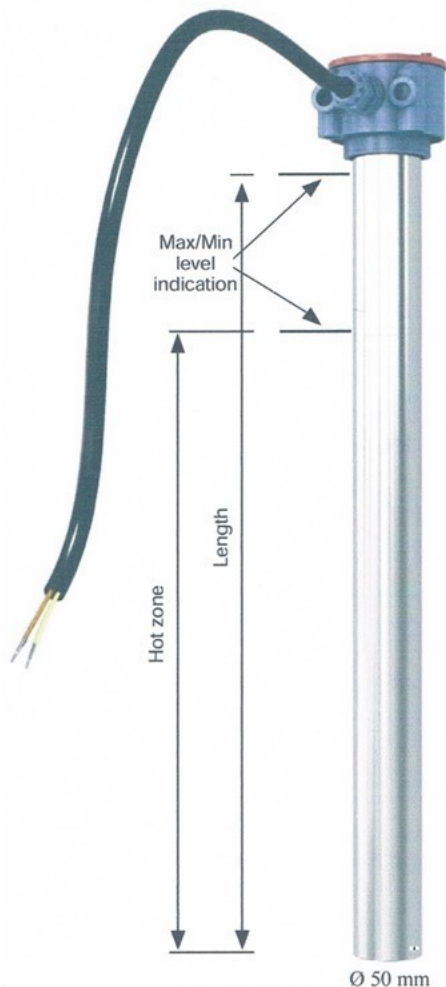
- Electroplating Fixtures
 - Electroplating Jigs for PCB
 - Paint Fixtures
 - Standard Titanium Anodising Jigs Part 1
 - Standard Titanium Anodising Jigs Part 2
 - Titanium Jig Accessories & Fasteners
 - Titanium Clips Part 1
 - Titanium Clips Part 2
 - Blocks & Cradles
 - Bespoke Titanium Jigs
 - Anodes
 - Heaters: VAT Hairpin H + S Tube Type 'U' Type Phosphate Tubular STFX Heater Controls
 - Process Tanks
 - Panels
 - Coils
 - Metal Finishing Accessories
- Globemarket t/a BEMCO**

Unit 101 - 102
 Middlemore Industrial Estate
 Middlemore Road
 Smethwick
 Birmingham
 B66 2EP
 Phone: 0121 236 5868
 Email: info@bemco.uk.com
rjl@bemco.uk.com

Phosphate Heaters

Certified Tubular Heater: Rigid Phosphate Heater– Model SFO for vertical use. Special heater for Phosphate bath.

- * SFO is the answer for heavy duty service.
- * Heating element are cast in aluminium inside a tube, outside diameter is 54mm
- * Tube of Stainless Steel 2350
- * Excellent heat transfer
- * Ratings from 1000-3300 Watts
- * 1-phase 230 Volts & 3-phase 400 Volts
- * Heat sealing reinforced PP, diameter 85mm. Threaded lid, sealed with O-rings. Sealing IP66
- * Impact resistant
- * Can withstand mechanical cleaning



Model	Watts	Length	Hot Zone	HES (Watts/cm ²)
SFO 60100 + V	1000	580mm	450mm	1.5
SFO 80018 + V	1800	780mm	550mm	2
SFO 10022 + V	2200	980mm	720mm	2
SFO 12528 + V	2800	1230mm	870mm	2
SFO 15033 + V	3300	1470mm	1120mm	2

Specify + V:

- 1 for 1 phase 230V
- 2 for 3 phase 230V
- 3 for 3 phase 400V

HES = Heat Exchange Surface watt/cm²

- Electroplating Fixtures
- Electroplating Jigs for PCB
- Paint Fixtures
- Standard Titanium Anodising Jigs Part 1
- Standard Titanium Anodising Jigs Part 2
- Titanium Jig Accessories & Fasteners
- Titanium Clips Part 1
- Titanium Clips Part 2
- Blocks & Cradles
- Bespoke Titanium Jigs
- Anodes
- Heaters:
 - VAT Hairpin
 - H + S Tube Type
 - 'U' Type
 - Phosphate Tubular
 - STFX
- Heater Controls
- Process Tanks
- Panels
- Coils
- Metal Finishing Accessories

Globemarket t/a BEMCO

Unit 101 - 102
 Middlemore Industrial Estate
 Middlemore Road
 Smethwick
 Birmingham
 B66 2EP

Phone: 0121 236 5868

Email:

info@bemco.uk.com

rjl@bemco.uk.com

Tubular Heaters

Certified Tubular Heaters 1000—4500 Watts, in Steel, Stainless Steel and Titanium.

- * **Head**— Sealing IP66. Reinforced PP, diameter 85mm. Threaded lid, sealed with O-rings. Easy opening head to replace conduit or heating element.
- * **Heating Element**—Heat resistant 304 Stainless Steel element, which can easily be changed if necessary.
- * **Conduit of PVC**—Earthed to metal parts with a standard length of 2

Titanium (STI) Grade 2 commercial pure <i>Diameter 50mm , Thickness 0.9mm</i>				
Model No.	Watts	Length	Hot Zone	HES
STI50010 + V	1000	480mm	370	2.1
STI60020 + V	2000	570mm	460	3
STI80020 + V	2000	780mm	610	2.3
STI80025 + V	2500	780mm	610	2.9
STI10030 + V	3000	980mm	780	2.6
STI12535 + V	3500	1210mm	900	2.6
STI15045 + V	4500	1470mm	1150	2.6

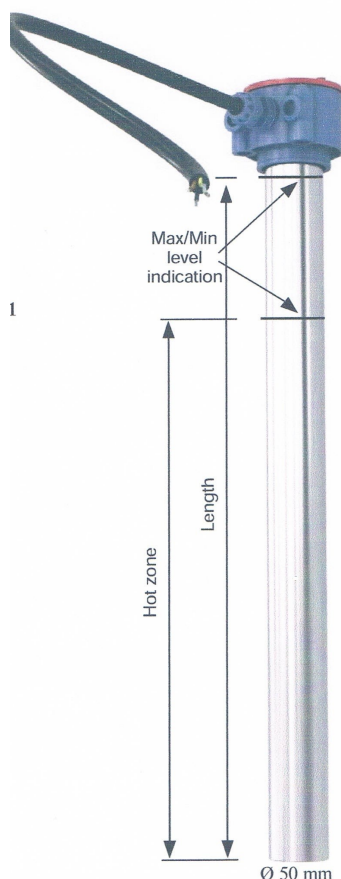
Stainless Steel tubes (SRF) EN10217-7 <i>Stainless Steel nr.1.4571</i> <i>Diameter 50mm , Thickness 1.5mm</i>				
Model No.	Watts	Length	Hot Zone	HES
SRF50010 + V	1000	480mm	370	2.1
SRF60020 + V	2000	570mm	460	3
SRF80020 + V	2000	780mm <td 610	2.3	
SRF80025 + V	2500	780mm	610	2.9
SRF10030 + V	3000	980mm	780	2.6
SRF12535 + V	3500	1210mm	900	2.6
SRF15045 + V	4500	1470mm	1150	2.6

Steel tubes (SST) EN10025:2004 <i>Steel nr.S235</i> <i>Diameter 50mm , Thickness 1.5mm</i>				
Model No.	Watts	Length	Hot Zone	HES
SST50010 + V	1000	480mm	370	2.1
SST60020 + V	2000	570mm	460	3
SST80020 + V	2000	780mm	610	2.3
SST80025 + V	2500	780mm	610	2.9
SST10030 + V	3000	980mm	780	2.6
SST12535 + V	3500	1210mm	900	2.6
SST15045 + V	4500	1470mm	1150	2.6

Specify + V:

- 1 for 1 phase 230V
- 2 for 3 phase 230V
- 3 for 3 phase 400V

HES = Heat Exchange Surface watt/cm²



Electroplating Fixtures

Electroplating Jigs for PCB

Paint Fixtures

Standard Titanium Anodising Jigs Part 1

Standard Titanium Anodising Jigs Part 2

Titanium Jig Accessories & Fasteners

Titanium Clips Part 1

Titanium Clips Part 2

Blocks & Cradles

Bespoke Titanium Jigs

Anodes

Heaters:
VAT Hairpin
H + S Tube Type
'U' Type
Phosphate
Tubular
STFX

Heater Controls

Process Tanks

Panels

Coils

Metal Finishing Accessories

Globemarket t/a BEMCO

Unit 101 - 102

Middlemore Industrial Estate

Middlemore Road

Smethwick

Birmingham

B66 2EP

Phone: 0121 236 5868

Email:

info@bemco.uk.com

rjl@bemco.uk.com

STFX—Flexible PTFE Heaters

Ratings 500 watts—3700 watts

Voltage: 1 phase 230v or 3 phase 400v

Also available in 3 phase 230v

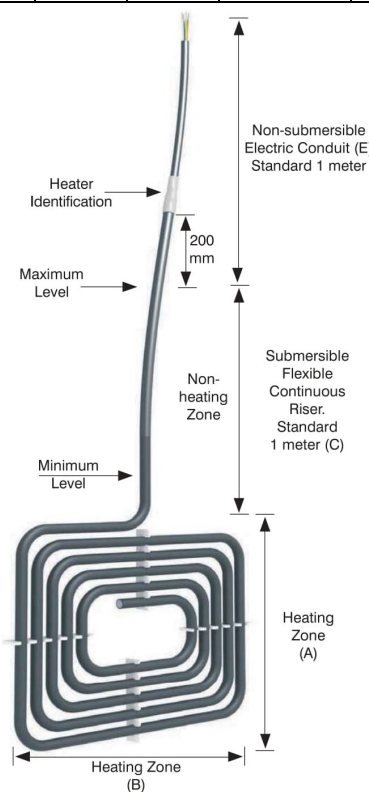
Options :

Overheat Protection

OHP1 or OHP 2

L-bent bottom mount

1 Phase 230v					3 phase 400v				
	A	B	Thickness	W/cm ²		A	B	Thickness	W/cm ²
0.5kW	230	180	35mm	1.5	2.25kW	335	340	35mm	1.5*
1kW	230	260	35mm	1.5	2.25kW	400	280	35mm	1.5*
1.5kW	260	300	35mm	1.5	2.25kW	460	255	35mm	1.5*
1.5kW	320	260	35mm	1.5	2.25kW	530	230	35mm	1.5*
1.5kW	350	220	35mm	1.5	2.25kW	625	215	35mm	1.5*
1.5kW	420	210	35mm	1.5	2.25kW	1030	150	35mm	1.5*
2kW	340	280	35mm	1.5	3kW	320	420	35mm	1.5*
2kW	540	200	35mm	1.5	3kW	410	325	35mm	1.5*
2kW	290	370	35mm	1.5	3kW	535	270	35mm	1.5*
2kW	245	410	35mm	1.5	3kW	640	240	35mm	1.5*
3kW	320	420	35mm	1.5	3kW	680	225	35mm	1.5*
3kW	410	325	35mm	1.5	3kW	880	195	35mm	1.5*
3kW	535	270	35mm	1.5	3kW	1050	160	35mm	1.5*
3kW	640	240	35mm	1.5	3.7kW	320	420	35mm	2
3kW	680	225	35mm	1.5	3.7kW	410	325	35mm	2
3kW	880	195	35mm	1.5	3.7kW	535	270	35mm	2
3kW	1050	160	35mm	1.5	3.7kW	640	240	35mm	2
4kW	340	280	50mm	1.5	3.7kW	680	225	35mm	2
4kW	540	200	50mm	1.5	3.7kW	880	195	35mm	2
4kW	290	370	50mm	1.5	3.7kW	1050	160	35mm	2
4kW	245	410	50mm	1.5					
6kW	320	420	50mm	1.5					
6kW	410	325	50mm	1.5					
6kW	535	270	50mm	1.5					
6kW	640	240	50mm	1.5					
6kW	680	225	50mm	1.5					
6kW	880	195	50mm	1.5					
6kW	1050	160	50mm	1.5					



Electroplating Fixtures

Electroplating Jigs for PCB

Paint Fixtures

Standard Titanium Anodising Jigs Part 1

Standard Titanium Anodising Jigs Part 2

Titanium Jig Accessories & Fasteners

Titanium Clips Part 1

Titanium Clips Part 2

Blocks & Cradles
Bespoke Titanium Jigs

Anodes

Heaters:
VAT Hairpin
H + S Tube Type
'U' Type
Phosphate
Tubular
STFX

Heater Controls

Process Tanks

Panels

Coils

Metal Finishing Accessories

Globemarket t/a BEMCO

Unit 101 - 102

Middlemore Industrial

Estate

Middlemore Road

Smethwick

Birmingham

B66 2EP

Phone: 0121 236 5868

Email:

info@bemco.uk.com

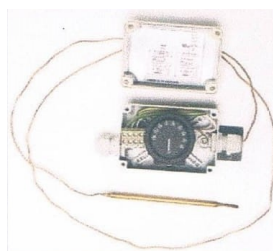
rjl@bemco.uk.com

Heater Controls

Thermostat—Isabelle Style

Non indicating thermostat with plastic junction box

Temperature sensor covered with Teflon for resistance in chemical solutions



Product Code	Power	Max Wattage	Max Amps	Temp Range	Sensor Length	Accuracy
Isabelle 1	230V	3100	16	30-90°C	1.5m	±1.5°C
Isabelle 2	3x400V	9000	16	30-90°C	1.5m	±1.5°C

Digital Thermal Regulator—Kelvin Style

- * Dual LED display to set points
- * Provides precise control in most aqueous processes
- * Use with PT-100 sensor
- * Temperature range with PT-100 sensor -50°C to +180°C. Accuracy ±0.6°C
- * Power 230V, 50/60Hz
- * Additional features Type J,K,T thermocouples



PT-100 Sensor Rigid

- * Probe in Stainless Steel (SS) coated in Teflon (PTFE)
- * Standard lengths 300mm, 400mm, 500mm and 800mm
- * Optional length available
- * Temperature range -50°C to +180°C



PT-100 Sensor Flexible

- * Teflon coated
- * Standard lengths 1.5m
- * Optional length available
- * Temperature range -50°C to +180°C



Electroplating Fixtures

Electroplating Jigs for PCB

Paint Fixtures

Standard Titanium Anodising Jigs Part 1

Standard Titanium Anodising Jigs Part 2

Titanium Jig Accessories & Fasteners

Titanium Clips Part 1

Titanium Clips Part 2

Blocks & Cradles

Bespoke Titanium Jigs

Anodes

Heaters:
VAT Hairpin
H + S Tube Type
'U' Type
Phosphate
Tubular
STFX

Heater Controls

Process Tanks

Panels

Coils

Metal Finishing Accessories

Globemarket t/a BEMCO

Unit 101 - 102

Middlemore Industrial Estate

Middlemore Road

Smethwick

Birmingham

B66 2EP

Phone: 0121 236 5868

Email:

info@bemco.uk.com

rjl@bemco.uk.com

Process Tanks

For over 30 years BEMCO has been designing and manufacturing process tanks for the metal finishing industry. Our products are designed in partnership with the customer and can include heating or cooling equipment.

We offer tanks in both Stainless Steel 304L and 316L, Titanium, Incoloy, Mild Steel and various plastics. We also offer various linings including Lead and Rubber. All these are manufactured at our Birmingham factory.



- Electroplating Fixtures
- Electroplating Jigs for PCB
- Paint Fixtures
- Standard Titanium Anodising Jigs Part 1
- Standard Titanium Anodising Jigs Part 2
- Titanium Jig Accessories & Fasteners
- Titanium Clips Part 1
- Titanium Clips Part 2
- Blocks & Cradles
- Bespoke Titanium Jigs
- Anodes
- Heaters:
 - VAT Hairpin
 - H + S Tube Type
 - 'U' Type
 - Phosphate Tubular
 - STFX
- Heater Controls
- Process Tanks
- Panels
- Coils
- Metal Finishing Accessories

Globemarket t/a BEMCO

Unit 101 - 102
Middlemore Industrial Estate
Middlemore Road
Smethwick
Birmingham
B66 2EP

Phone: 0121 236 5868

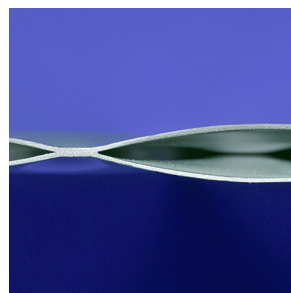
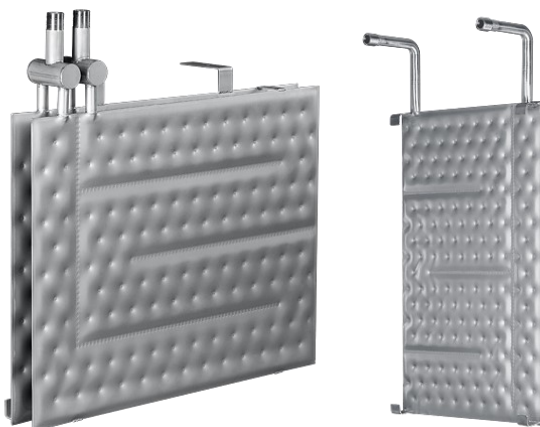
Email:

info@bemco.uk.com

rjl@bemco.uk.com

Thermal & Cooling Panels

BEMCO Thermal Panels are double embossed and constructed of Titanium or Stainless. They offer more efficient regulator of process solutions than traditional coiled systems. Consider the Benefits:- Thermal Panels occupy less than one third of the space taken up by conventional coils of equivalent output. This means that more space is available for extra throughput or for improving tank layout. Moreover because of their narrow profile (less than ½" deep) they can be slotted into the narrowest of apertures. Other benefits include the reduced possibility of mechanical or electrical damage (arcing), because of their relative size, and increased resilience to damage or deformation by nature of their construction. They are equally suitable for heating as they are for cooling and entirely compatible with most conventional media (e.g. steam, high pressure hot water, thermal oil, glycol, chilled and mains water etc.). Because of their design and flow characteristics, pressure drop and steam hammer considerations are virtually eliminated. Standard BEMCO panels measuring 750 x 600 mm wide and incorporating two 15" (380mm) long ¾" BSP connections, are available in Titanium and Type 316 Stainless. Other sizes and terminations can be supplied on request. Fixing straps / brackets and liquid level shrouds can also be fitted. Each panel is 150lb (10 bar) rated and hydraulically tested prior to delivery.



Electroplating Fixtures
Electroplating Jigs for PCB
Paint Fixtures
Standard Titanium Anodising Jigs Part 1
Standard Titanium Anodising Jigs Part 2
Titanium Jig Accessories & Fasteners
Titanium Clips Part 1
Titanium Clips Part 2
Blocks & Cradles
Bespoke Titanium Jigs
Anodes
Heaters:
VAT Hairpin
H + S Tube Type
'U' Type
Phosphate Tubular
STFX
Heater Controls
Process Tanks
Panels
Coils
Metal Finishing Accessories

Globemarket t/a BEMCO

Unit 101 - 102
Middlemore Industrial Estate
Middlemore Road
Smethwick
Birmingham
B66 2EP

Phone: 0121 236 5868

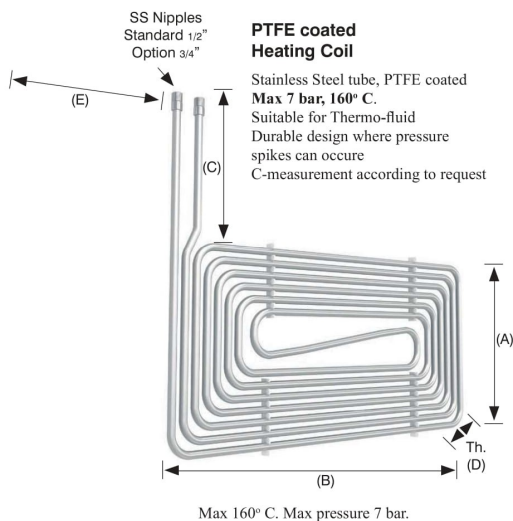
Email:

info@bemco.uk.com

rjl@bemco.uk.com

Heating & Cooling Coils

BEMCO have been overcoming problems of heat transfer in aggressive environments ever since the introduction of Titanium metal to the Surface Treatment and Chemical Processing Industries and our heating and cooling coils have led the field for maintenance-free attemperator of process solutions, chemicals and foodstuffs. Titanium, Incoloy, PTFE, Stainless and Carbon Steels are included in our wide range of materials. For our customers' convenience the standard BEMCO Titanium coil is offered. It has been designed for vats with depths of 2 to 3 feet. Two or more coils can be installed to give the heating (or cooling) performance required. BEMCO coils are all designed to provide high efficiency vat heating and cooling with lower initial costs than water jacket systems. Control of the solution is more accurate, while the absence of non-conducting layers results in greatly increased transfer efficiency. Titanium has proved particularly suitable for heating and cooling coils in the Metal Finishing and Chemical Industries. Its lightness, strength and resistance to corrosion in many solutions means long and trouble free operation with very easy installation. We are always pleased to advise on installation for liquid phase heating or cooling and to fabricate / supply to meet special requirements. Custom built coils can be supplied, side mounted, base mounted or spirally wound complete with any type of inlet / outlet terminations and liquid level shrouds if required. All BEMCO coils are hydraulically tested at 450 p.s.i./ 30 bar, prior to delivery unless otherwise specified.



Electroplating Fixtures

Electroplating Jigs for PCB

Paint Fixtures

Standard Titanium Anodising Jigs Part 1

Standard Titanium Anodising Jigs Part 2

Titanium Jig Accessories & Fasteners

Titanium Clips Part 1

Titanium Clips Part 2

Blocks & Cradles

Bespoke Titanium Jigs

Anodes

Heaters:
VAT Hairpin
H + S Tube Type
'U' Type
Phosphate Tubular
STFX

Heater Controls

Process Tanks

Panels

Coils

Metal Finishing Accessories

Globemarket t/a BEMCO

Unit 101 - 102

Middlemore Industrial

Estate

Middlemore Road

Smethwick

Birmingham

B66 2EP

Phone: 0121 236 5868

Email:

info@bemco.uk.com

rjl@bemco.uk.com

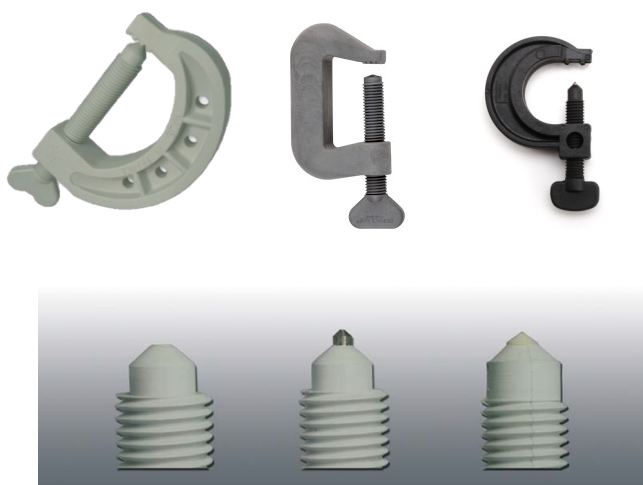
Metal Finishing Accessories

Wire: We offer a range of soft **Aluminium** and **Copper** wire in 5kg or 10kg coils or reels. The Sizes include: **0.914mm**(20swg), **1.2mm**(18swg), **1.6mm**(16swg), **2mm**(14swg), **2.59mm**, **3.25mm**(10swg) & **4mm**(8swg).



Plastic G-Clamp: These G-Clamps will stand up to the toughest racking requirements for your anodising needs. The tips are either ceramic or titanium. Available in Black or White.

Style	Type
390	Plain
390T	Tipped
476	Plain
476T	Tipped
508	Plain
508T	Tipped
635	Plain
635T	Tipped
635T2	Double Tipped
1016	Plain
1016T	Tipped
10162T	Double Tipped



Standard Size M6 Red PCB Thumb Screw: These are readily available from stock to be put in to a stem or frame jig to hold Printed Circuit Boards allowing current to be passed through without damaging the PCB itself.



Hexies: Hexagonal plastic floats are used as an insulating layer to suppress evaporation from open surfaces of volatile or hot liquids. When placed on the liquid, these floats will spread and arrange themselves in a blanket that reduces the exposed surface of plating baths. Hexagonal plastic floats can provide 95% surface coverage. By lessening the exposed surface area, the blanket of floats conserves energy and reduces costs by decreasing heat and fluid loss, while suppressing odours. Hexagonal floats are particularly useful in situations where dipping in and out of a solution is required. These floats do not block access to the tank and automatically re-adjust to maintain coverage after parts are submerged or removed. Our floats are made of expanded polypropylene and can be used continuously at temperatures up to 100°C. They are available in two sizes: **50MM** and **100MM**.



Electroplating Fixtures

Electroplating Jigs for PCB

Paint Fixtures

Standard Titanium Anodising Jigs Part 1

Standard Titanium Anodising Jigs Part 2

Titanium Jig Accessories & Fasteners

Titanium Clips Part 1

Titanium Clips Part 2

Blocks & Cradles

Bespoke Titanium Jigs

Anodes

Heaters:
VAT Hairpin
H + S Tube Type
'U' Type
Phosphate
Tubular
STFX

Heater Controls

Process Tanks

Panels

Coils

Metal Finishing Accessories

Globemarket t/a BEMCO

Unit 101 - 102

Middlemore Industrial Estate

Middlemore Road

Smethwick

Birmingham

B66 2EP

Phone: 0121 236 5868

Email:

info@bemco.uk.com

rjl@bemco.uk.com